

# NOTICE OF RACE

## 2025 ILCA 6 Youth World Championships

28 July – 4 August 2025

**Cabrillo Beach Yacht Club, Los Angeles, USA**

**Organizing Authority: Cabrillo Beach Yacht Club (Host)  
and the International Laser Class Association (ILCA)**

### 1. RULES

---

- 1.1 The event will be governed by the rules as defined in the Racing Rules of Sailing (RRS).
- 1.2 The following US Sailing prescriptions apply: rule 61.4, Appendix R, the prescription to the preamble to Part 5, and the prescriptions to rules 65.1, 70.3(b) and 76.1. The 2025-2028 prescriptions will be available at <https://www.ussailing.org/competition/rules-officiating/racing-rules/> and will be posted on the official notice board when they are available.
- 1.3 ILCA class rule 7(a) is changed as follows: "Only one person (the registered competitor) shall be on board while racing."
- 1.4 RRS Appendix P, Special Procedures for Rule 42 applies.
- 1.5 RRS Appendix T, Arbitration will apply.
- 1.6 In all rules governing this regatta;
  - 1.6.1. Both 'athlete' and 'competitor' mean a person competing or intending to compete in the regatta.
  - 1.6.2. **[SP]** denotes a rule for which a standard penalty may be applied by the Race Committee or Technical Committee without a hearing, or a discretionary penalty applied by the International Jury with a hearing (this changes RRS A5); and
  - 1.6.3. **[NP]** denotes a rule that shall not be grounds for protests by a boat and for which the International Jury may refuse to hold a hearing. This changes RRS 60.1 and 63.2(a).
- 1.7 If there is a conflict between languages the English text will take precedence.
- 1.8 RRS 90.3(e) applies.

### 2. [DP] ADVERTISING & EQUIPMENT PROVIDED BY THE ORGANIZING AUTHORITY

---

- 2.1 When provided by the Organizing Authority (OA), boats or competitors shall carry, display or wear the following as instructed:
  - 2.1.1. Coloured bibs for event leaders (1<sup>st</sup>, 2<sup>nd</sup> and 3<sup>rd</sup>);
  - 2.1.2. Event advertising;
  - 2.1.3. Cameras, camera dummies and sound equipment;
  - 2.1.4. **[SP]** Tracking and timing system equipment.

### 3. [DP] COMMUNICATION

---

- 3.1 The Official Notice Board (ONB) will be online on the event website: <https://2025ilca6youth.ilca-worlds.org/>
- 3.2 From the first warning signal until the end of the last race of the day, except in an emergency or when using equipment provided by the race committee or organizing authority, a boat shall not make voice, radio or data transmissions and shall not receive voice, radio or data communication that is not available to all boats. This restriction also applies to mobile telephones.

### 4. ENTRY REGULATIONS

---

- 4.1 All entries shall meet the requirements of World Sailing Regulation 19 – Eligibility Code.
- 4.2 On 1 March 2022, World Sailing published the following recommendations in reaction to the situation in Ukraine: <https://www.sailing.org/2022/03/01/world-sailing-statement-6/>. To help preserve the integrity and safety of the 2025 ILCA 6 Youth World Championship, entries shall be open to competitors and support persons of all nationalities, but not to competitors and support persons holding only Russian or Belarusian nationality. The organizing authority may amend this rule following any further World Sailing decisions on the situation with Russia and Belarus.

- 4.3 Only current, fully paid members of ILCA and of a World Sailing member national authority may enter the event. These memberships shall be with the ILCA Fleet/District Association and with the World Sailing member national authority of the country, where the competitor normally sails, even though such place may not be his permanent residence; however, such member, for any valid reason and with the approval of both District Chairmen, may select instead the Fleet/District and the World Sailing member national authority in which he has permanent residence in accordance with the ILCA Constitution, Article 10(3) and the ILCA Class Rules, Part Two, Article 9. The competitor can only be member of one ILCA Fleet/District Association. This rule does not apply to competitors holding only Russian or Belarusian nationality.
- 4.4 Crew substitution of the registered competitor is not permitted.
- 4.5 No resale or transfer of entries is allowed.
- 4.6 This is an allocated place event. Each competitor shall apply using the official online application form.
- 4.7 Each competitor shall have a World Sailing Sailor ID, which is required to enter the event. A World Sailing Sailor ID can be obtained free of charge by registering online at:  
<https://www.sailing.org/sailors/world-sailing-profile/>
- 4.8 Entry is restricted to experienced sailors who are or will be at least 15 years old but not 19 years or older in the year of the event i.e., born in 2007, 2008, 2009, or 2010. Proof of age will be required at registration.
- 4.9 Each competitor shall bring at registration a completed parent/guardian consent form. For the duration of the championship, each competitor shall be supervised by the responsible adult named on the parent/guardian consent form.
- 4.10 The responsible adult (if applicable) and competitors shall register together on site at the race office during registration.
- 4.11 An entry is not complete until payment has been received and the boat has completed registration at the venue. Registration will include equipment inspection and entry requirement checks.
- 4.12 At the discretion of ILCA, the total number of entries may be restricted to 240.

## 5. APPLICATION & ENTRY

---

- 5.1 Applications for entry will be open on ILCA event website from 29 January 2025 and will be accepted in accordance with the "Application and Entry Procedure" appended to this notice of race.
- 5.2 The application closing date is 30 March 2025.
- 5.3 The entry closing date is 28 June 2025.
- 5.4 The entry fee is USD \$495.
- 5.5 Entries completed after the entry closing date may be accepted solely at the discretion of ILCA and upon payment of a late entry fee of USD \$595 (USD \$495 + USD \$100).

## 6. CHARTER BOATS

---

- 6.1 A limited number of charter boats will be available and may be booked through the official ILCA on-line entry system.
- 6.2 See Attachment 2 of this notice of race for information about charter boats.

## 7. [NP] [DP] BOATS AND EQUIPMENT

---

- 7.1 The event will be sailed in ILCA dinghy boats as recognized by World Sailing, commonly sold under the brand name "ILCA" or "Laser." All boats must have a valid World Sailing plaque attached in accordance with the ILCA class rules to the aft face of the cockpit.
- 7.2 All competitors shall use only one hull, sail, batten set, mast, boom, centreboard and rudder; all of which shall be identified during equipment inspection.
- 7.3 In the event of damage, boats and equipment may only be substituted with the written permission of the technical committee in accordance with the sailing instructions.
- 7.4 For the purposes of RRS G1.1, sails shall display the national letters of the World Sailing member national authority under which the entry was accepted. This changes RRS G1.1.
- 7.5 When ashore boats shall be kept in their assigned places at the venue.
- 7.6 Access to the boat park may be restricted during certain hours including the hours of darkness.
- 7.7 Boats will be required to display the fleet identification colors. This is the competitor's responsibility to bring their own fleet identification sleeves/sheets (Yellow, Blue, Red, Green) to the event. The size of the fleet identification sleeves/sheets is 30cm long and shall cover all around the bottom mast section between the boom vang fitting and the boom.

## 8. FORMAT

---

- 8.1 The event may be split into fleets, to sail a qualifying series followed by a final series.
- 8.2 If four races of a qualifying series have not been completed for each fleet by the end of the third scheduled racing day, that qualifying series will continue until the end of the racing day in which a fourth qualifying race is completed.
- 8.3 The complete format will be defined in the Sailing Instructions.

## 9. SCHEDULE

9.1 The event schedule:

Date	Event
28 July	0900-1300 & 1330-1830 Registration, Equipment Inspection
29 July	0900-1300 Registration, Equipment Inspection 1400 Practice Race 1700 Coaches & Team Leaders' Meeting 1800 Opening Ceremony
30 July	2 races back-to-back, (Qualifying series)
31 July	2 races back-to-back, (Qualifying series)
1 August	2 races back-to-back, (Qualifying series)
2 August	2 races back-to-back, (Qualifying/Final series, if 4 races have been sailed)
3 August	2 races back-to-back, (Qualifying/Final series)
4 August	2 races back-to-back, (Qualifying/Final series) 1600 Last possible Warning Signal 1830 Prize Giving Ceremony

9.2 The time of the first warning signal on racing days will be at 1200. The sea breeze does not fill until late morning. It builds to a peak around 1500 or 1600.

9.3 Each day succeeding races will be started as soon as practicable after the finish of the previous race.

9.4 On the last day of the championship, no warning signal will be made after 1600. Prize giving is at 1830.

## 10. SAILING INSTRUCTIONS

The Sailing Instructions will be available from the ILCA event website (ONB) before the Registration.

## 11. VENUE & RACE OFFICE

11.1 The race office is located at the venue: Cabrillo Beach Youth Waterfront Sport Center, 3000 Shoshonean Rd., San Pedro, CA 90731, USA. See attachment 4.

11.2 The race office is open during registration and on each race day from 0900 until 30 minutes after the protest time limit unless extended at the discretion of the race committee.

## 12. TECHNICAL COMMITTEE AND EQUIPMENT INSPECTION

12.1 A technical committee will be appointed in accordance with RRS 92.

12.2 **[NP] [DP]** Information on equipment inspection will be posted on the official notice board. Boats shall be presented with all equipment that shall be used in the event, with the bottom mast and boom with all control lines rigged and with the sail and top section derigged ready for inspection.

12.3 Equipment inspection will take place at the boat park during registration. Equipment inspection outside these times will only be possible at the discretion of the technical committee and on payment of USD \$20.

12.4 Wet clothing and equipment inspections may be made throughout the event at the discretion of the class representative, technical committee, or the jury.

## 13. INTERNATIONAL JURY

13.1 An international jury will be appointed in accordance with RRS 91(b). Its decisions will be final as provided in RRS 70.3.

## 14. COURSES

14.1 A trapezoid course will be used. The target time for the first boat in each race will be 50 minutes.

## 15. SCORING

15.1 A minimum of 4 (four) races are required to be completed to constitute a championship.

15.2 A boat's series score shall be the total of her race scores excluding her worst score as follows:

Races	Discards	Comments
1-3	0	No discard
4 or more	1	One worst score excluded. If only one Final series race is completed it will not be excluded.

15.3 U17 results will be determined by the series score in the overall competition and will be extracted from overall results without recalculation.

15.4 U17 sailors are those sailors that will not become 17 or older in the year of the championship.

15.5 The detailed scoring will be defined in the Sailing Instructions.

## 16. TITLES & PRIZES

---

- 16.1 The first placed male competitor in the championship will be titled as ILCA 6 Youth Men's World Champion.
- 16.2 The first placed female competitor in the championship will be titled as ILCA 6 Youth Women's World Champion.
- 16.3 The first placed U17 male competitor will be awarded an ILCA 6 U17 Youth Men's prize.
- 16.4 The first placed U17 female competitor will be awarded an ILCA 6 U17 Youth Women's prize.
- 16.5 ILCA cube trophies will be awarded in accordance with the ILCA Honour Award By-Law.
- 16.6 Prizes will be awarded to the top 3 competitors in each division.

## 17. [DP] SAFETY

---

- 17.1 Each competitor shall always wear a personal flotation device when afloat except briefly while changing or adjusting clothing or personal equipment. Wet suits and dry suits are not personal flotation devices.

## 18. [NP] [DP] SUPPORT PERSONS AND VESSELS REGISTRATION

---

- 18.1 Support vessels shall be pre-registered online at the ILCA event website by the entry closing date.
- 18.2 A support person/coach will be required to pay a fee of USD \$200, plus a support vessel flag fee of USD \$15 upon registration.
- 18.3 Support/coach vessel drivers shall confirm registration of their vessels and submit the names and sails numbers of the competitors they are supporting at the race office before the end of registration.
- 18.4 Support/coach vessels shall clearly display an identification number supplied at registration. No other individual support vessels shall be used.
- 18.5 Support persons/coaches shall comply with the Support Vessel Regulations. See Attachment 3.
- 18.6 Support/coach vessels must be less than 7 meters (23 feet).
- 18.7 Mooring space USD \$25/day for support/coach vessels must be obtained from Host prior to or at Registration Pickup. Space is limited.
- 18.8 Support/coach vessel trailer storage \$10/day (if applicable) must be obtained from Host prior to or at Registration Pickup. Space is limited.

## 19. TELEVISION AND MEDIA

---

- 19.1 By entering the event competitors automatically grant to the organizing authority, their sponsors and World Sailing the right to use the competitor's name, likeness, image, photograph, voice, video, athletic performance, biographical information and any other indicia of identity, in any format whatsoever, from the event (collectively, competitor's "Identifications"), and to distribute, broadcast and exhibit competitor's Identifications, without any charge, restriction, liability, or compensation to the competitor in any media now known or hereafter devised (including, but not limited to, television, internet, web casting, and video streaming) or in various publications into perpetuity.
- 19.2 Competitors may be required for interviews at the event.

## 20. [NP] OFFICIAL CEREMONIES & DRESS CODE

---

- 20.1 Competitors should attend the opening ceremony, prize giving & closing ceremony. Smart casual clothes shall be worn.

## 21. LIABILITY AND INDEMNIFICATION

---

- 21.1 The Host, ILCA, and all their officers, members and volunteers do not accept liability for loss of life or property, or personal injury or damage caused by or arising out of the event. Competitors take part in the event at their own risk.
- 21.2 The establishment of the notice of race and the sailing instructions in no way limits or reduces the complete and unlimited responsibilities of competitors being solely and entirely responsible for the management of their boats before, during and after the championship.
- 21.3 Competitors shall maintain their boats in a safe and seaworthy condition.
- 21.4 A competitor shall be of good health and a competent sailor capable of racing an ILCA dinghy in open water in all conditions, including strong winds.
- 21.5 At-fault occurrences to other boats are the responsibility of the competitor. Competitors are not covered by any liability insurance provided by the organizing authority and should provide their own coverage for personal goods and liability protection. The organizing authority recommends that competitors consult their own insurance carriers to ensure they are covered at this event and regarding additional personal liability insurance coverage.
- 21.6 A competitor is advised to have personal accident and health insurance that covers him while attending the event and while racing.

- 21.7 To the fullest extent permitted by law, each competitor agrees to indemnify and hold ILCA, the Host, owners, affiliates, officers, employees, agents, members, volunteers, committee persons and race officials, acting in their official capacities, harmless from any claim arising from a competitor's acts or omissions.

## 22. CREDENTIALS

---

- 22.1 Event Credentials for family members, friends and spectators shall be purchased at Registration Pickup (Adults 18+ USD \$25, Children under 18 USD \$10) for entry into Event Grounds.
- 22.2 Early registration for non-competitor Event Credentials will be possible through the official <https://2025ilca6youth.ilca-worlds.org> website beginning in January 2025.

## NOTICE OF RACE ENDS

---

For the venue questions, including pre-event training questions, please contact the Event Chairperson Mr. Jerry Beaver [jerry.beaver@2025ilcaworldslosangeles.org](mailto:jerry.beaver@2025ilcaworldslosangeles.org) or [info@2025ilcaworldslosangeles.org](mailto:info@2025ilcaworldslosangeles.org).

For accommodations, please check the Event website: <https://2025ilca6youth.ilca-worlds.org> or email [accommodations@2025ilcaworldslosangeles.org](mailto:accommodations@2025ilcaworldslosangeles.org). The Double Tree Hilton Hotel is the "preferred hotel of choice" and Platinum Sponsor for this Event. It is a two-minute walk to the sailing venue and a five-minute walk to Cabrillo Beach Yacht Club.

Neither the Host nor ILCA take responsibility for travel and accommodation arrangements.

## ATTACHMENT 1

# ILCA Application and Entry Procedure

## 1. PAYMENTS & REFUNDS

---

- 1.1 All fees shall be paid online using Pay Pal or credit card. Credit cards used for payment should have an expiry date at least 3 months later than the entry closing date.
- 1.2 Refunds (if any) will be made to the same Pay Pal account or credit card.

## 2. APPLICATION PROCEDURE

---

- 2.1 Applications will be accepted until the application closing date, with payment of a USD \$50 application fee which will be deducted from the entry fee, retained by ILCA, or refunded to the competitor under certain circumstances detailed in 4.1.
- 2.2 After the application closing date each ILCA National Association will review and rank the applications from its country or district.
- 2.3 ILCA National Associations may refuse a competitor's application based on sailing ability, membership status or failure to meet other national entry requirements. Competitors will be notified by email when their applications are refused, and the reason for the refusal will be specified.
- 2.4 Not later than 15 days after the applications closing date each applicant that has been ranked by the ILCA National Association will either:
  - (a) receive an entry offer via email, or
  - (b) have their application added to the waiting list.All competitors that are ranked within the country allocation limit (see the ILCA event website for allocation limits) will receive an entry offer. Applications ranked lower than the country allocation limit will be added to the waiting list. The status of each competitor will be listed and automatically updated on the event website.
- 2.5 After allocated entries are offered, extra entries will be offered to competitors on the waiting list as they become available.
- 2.6 When an entry is offered the competitor must accept or refuse the offer prior to their entry offer expiration date. This date is usually 14 days after the date the entry offer is made, though it may be of shorter duration for entry offers made close to or after the entry closing date.

## 3. LATE APPLICATIONS

---

- 3.1 Competitors who do not apply by the application closing date may have very little chance to attend the event. Nevertheless, competitors may submit a late application from approximately 15 days after the application closing date until the entry closing date. Once the ILCA National Association has accepted and ranked the late application it will be automatically added to the waiting list.

## 4. APPLICATIONS – CANCELLATION & REFUNDS

---

- 4.1 The full application fee less bank charges of USD \$5 will be refunded if:
  - (a) the application is cancelled via the link provided in the confirmation email before an entry offer is received, or
  - (b) the applicant is offered an entry and refuses the offered entry before the expiration date stated in the entry offer, or
  - (c) the applicant is not offered an entry, or
  - (d) the application is refused by the National Laser Association / District.
- 4.2 Refunds will be made as soon as possible and not later than a week after the start of the event.
- 4.3 The application fee is not refundable if a competitor is offered an entry and fails to accept or refuse the offer within this time.

## 5. ENTRIES – CANCELLATION & REFUNDS

---

- 5.1 If a competitor cancels an entry on or before the entry closing date the full entry fee less a USD \$50 cancellation fee will be refunded approximately one week after the entry closing date.
- 5.2 **No fees are refundable for cancellations after the entry closing date.**

## ATTACHMENT 2

# ILCA Charter Boats

### 1. RESERVATIONS AND PAYMENTS

---

- 1.1 A limited number of charter boats will be made available to competitors for reservation through the ILCA on-line entry system.
- 1.2 Required and optional charter fees will be listed on the ILCA event website, and will be displayed during checkout and payment.
- 1.3 A reservation is established by paying all required charter fees and a refundable damage deposit.
- 1.4 ILCA is acting in the capacity of booking agent and the charter agreement is between the sailor and the charter provider.
- 1.5 Refunds (if any) will be made to the same Pay Pal account or credit card.

### 2. TERMS & CONDITIONS

---

- 2.1 Sailors using charter equipment will be bound by the "Charter Terms and Conditions" available for preview in the Documents section of the ILCA events website - <https://sailing.laserinternational.org/public/site/event-list>
- 2.2 At the regatta venue, the sailor and any applicable guardian must sign the "Charter Terms and Conditions" before receiving charter equipment from the charter provider.

### 3. CHARTER CANCELLATION & REFUNDS

---

- 3.1 For cancellations before or on the entry closing date, charter fees are non-refundable unless the sailor's entry is also cancelled. In that case the full charter fee less a EUR €200 cancellation fee will be refunded approximately one week after the entry closing date.
- 3.2 No charter fees are refundable after the entry closing date.
- 3.3 The refundable damage deposit, less any charges for damage incurred, will be refunded to the original payor of the damage deposit.

## ATTACHMENT 3

# Support Vessel Regulations

### 1. GENERAL

---

- 1.1 This Support Vessel Regulations (SVR) shall apply from first day of registration until the end of prize giving ceremony.
- 1.2 For the purposes of these regulations, a support vessel includes any vessel that is under the control or direction of a person who is or may provide physical or advisory support to an athlete, including the gathering of data that may be used at a later time.
- 1.3 The organizing authority may inspect vessels at any time to ensure that they comply with these regulations, and the person responsible for the vessel shall facilitate such inspection.
- 1.4 The organizing authority may change these regulations at any time. Any changes will be posted on the official notice board.
- 1.5 Support vessels and designated drivers shall be registered at the race office either before leaving the venue by water for the first time or by 1800 on the day before the first race of a competitor that it is supporting, whichever is earlier.
- 1.6 Each support vessel driver shall confirm registration of their vessels and submit the names and sail numbers of the boats they are supporting at the race office before the end of registration.
- 1.7 Each vessel shall be insured with valid third-party liability insurance with a minimum coverage of USD \$1,500,000 (or equivalent) per incident.
- 1.8 Only the registered person may be a designated driver.
- 1.9 The person registering the support vessel shall sign to confirm that:
  - 1.9.1 he / she holds a valid insurance certificate showing proof of third-party liability coverage as required by SVR 1.8;
  - 1.9.2 the designated driver has a motorboat driving license recognized by a national authority appropriate to that vessel; (Californian residents will be required to have a boater's card.)
- 1.10 Support vessels shall be marked as follows:
  - 1.10.1 The three-letter MNA code shall be clearly displayed on both sides of the vessel in strongly contrasting colours at all times while afloat;
  - 1.10.2 The minimum height for the letters shall be 200mm. The letters will not be provided by the organizing authority;
  - 1.10.3 A Support Vessel Number label, if supplied by the organising authority, shall also be clearly displayed on the support vessel.

### 2. SAILING VENUE

---

- 2.1 Only support vessels that are registered will be allowed into the sailing venue.
- 2.2 When not in use, support vessels shall be appropriately berthed in the assigned location (mooring fees apply) at the sailing venue in the allocated areas for support vessels for the entire time that these SVR apply.

### 3. SAFETY

---

- 3.1 Support vessels shall carry on board:
  - 3.1.1 Life jackets / buoyancy aid for all passengers and the driver;
  - 3.1.2 First-aid kit;
  - 3.1.3 VHF radio;
  - 3.1.4 Device for making a sound signal;
  - 3.1.5 Compass;
  - 3.1.6 Adequate anchor and tackle for conditions and depth;
  - 3.1.7 Tow rope (minimum 15m long and 10mm thick);
  - 3.1.8 Operational engine kill cord (also known as a safety lanyard or automatic engine immobilizer);
  - 3.1.9 Knife.
- 3.2 The kill cord shall be used at all times when the engine is running.
- 3.3 Support persons are responsible for overseeing the safety of their support vessels on the water, including knowledge of who is afloat and ensuring their safe return to the venue.
- 3.4 At all times, the registered driver(s) of a support vessel shall comply with directions given by a race official. In particular, this includes assisting in rescue operations when requested to do so.



## 4. GENERAL RESTRICTIONS

---

- 4.1. The registered driver(s) of a support vessel will be responsible for the control of the vessel at all times and will be held responsible for any inappropriate behaviour, dangerous actions or improper practices, or actions affecting the fairness or safety of competition.
- 4.2. Support vessels shall not leave any device, piece of equipment, buoy, marker or similar item permanently in the water. Temporary use of floating objects is allowed for current measurement. These objects shall be removed as soon as the measurement has been taken.
- 4.3. Support vessels should take particular care to minimize their wash when transiting the course areas.

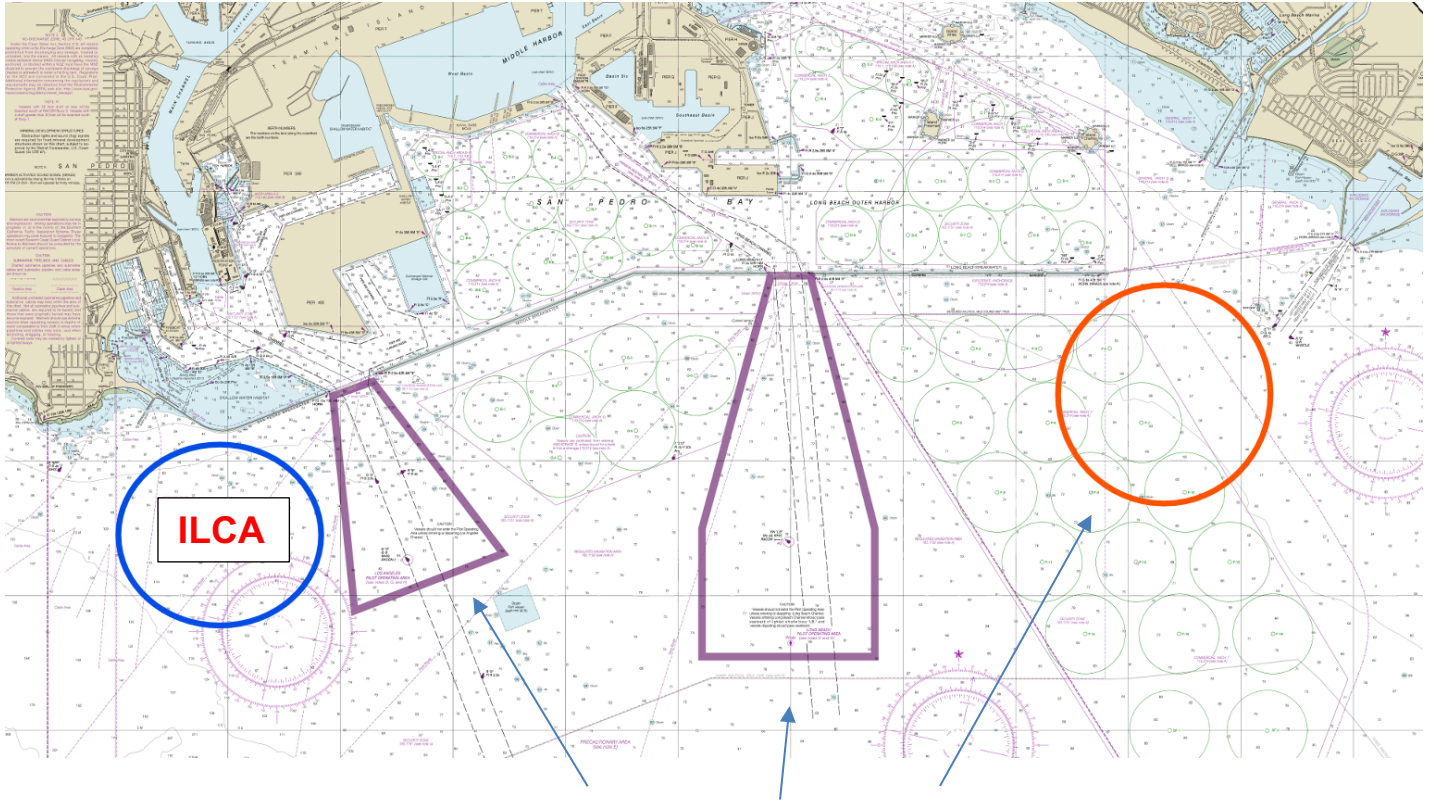
## 5. SUPPORT VESSEL ZONE

---

- 5.1. Support vessels shall not be positioned:
  - 5.1.1. Closer than 100 meters of any boat racing;
  - 5.1.2. Within 100 meters of the starting line and marks from the time of the preparatory signal until all boats have left the starting area, or the race committee signals a postponement or abandonment;
  - 5.1.3. Between any boat racing and the next mark of the course;
  - 5.1.4. Between the inner loop and outer loop trapezoid courses when boats are racing on both courses;
  - 5.1.5. Within 100 meters of any mark of the course while boats are in the vicinity of that mark;
  - 5.1.6. Within 100 meters of the finishing line and marks while boats are finishing.
  - 5.1.7. When any boat is racing from mark 5 to the finish, coach/ support boats shall stay out the area from 100 meters below mark 5 to 100 meters above the finish line.
  - 5.1.8. When boats are finishing coach/support boats shall stay more than 100 meters outside and to windward of the starboard end of the finish line until all boats in all fleets have finished.
  - 5.1.9. In addition, support vessels that are motoring above 5 knots shall remain at least 150 meters from any boat racing.

**ATTACHMENT 4**

**Racing Area & Venue Map**



2028 Olympic Racing Areas,  
Not in use